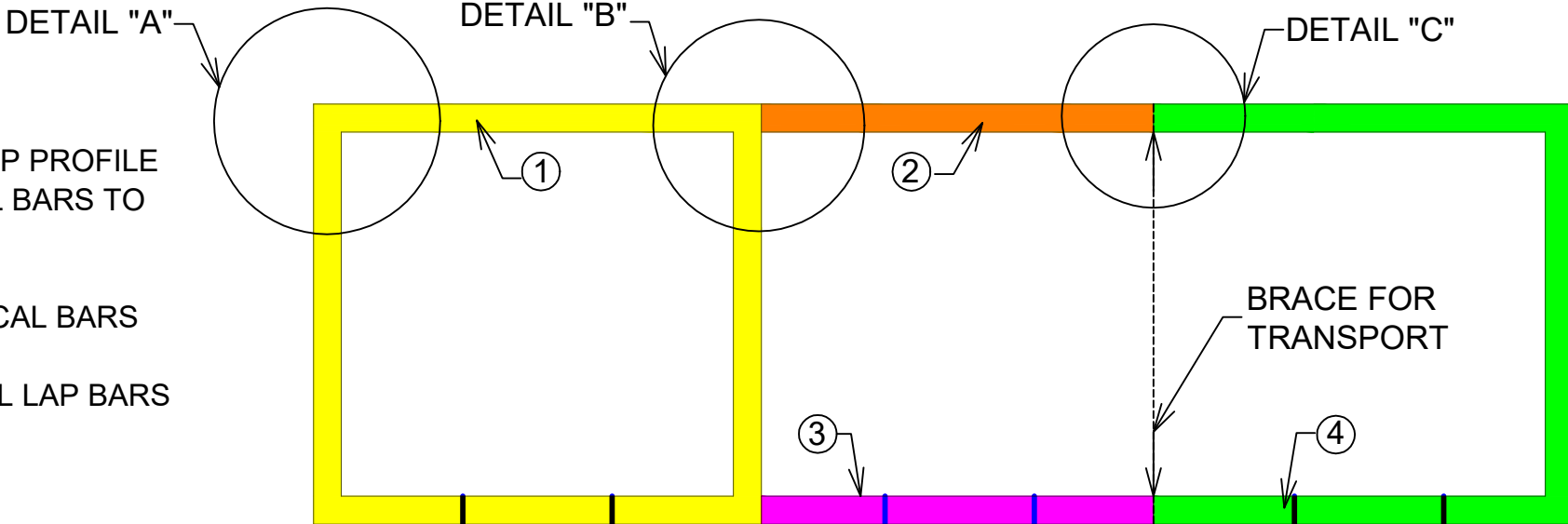




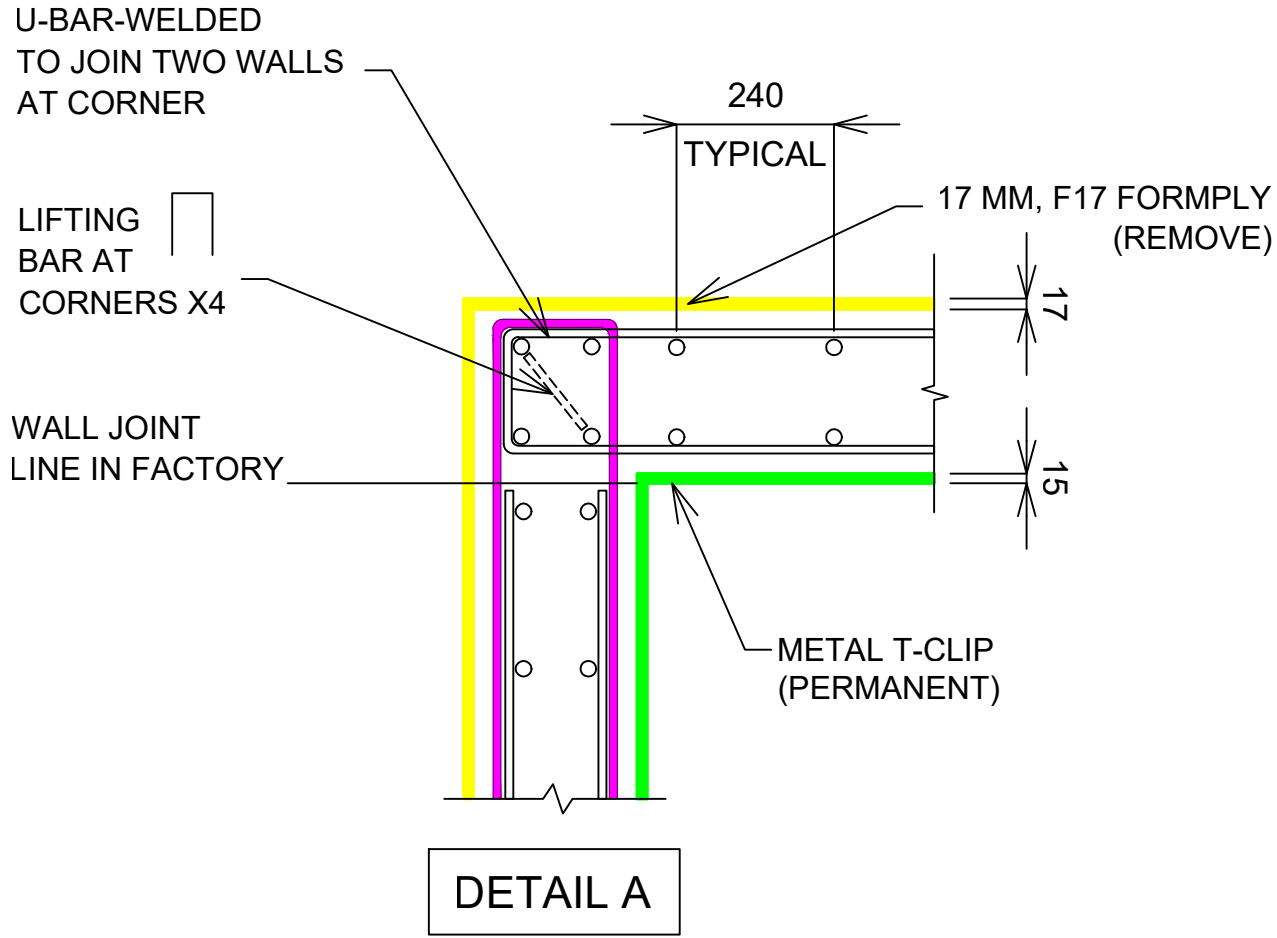
OZWALL AUSTRALIA LIFT CORE OPTION

NOTES:

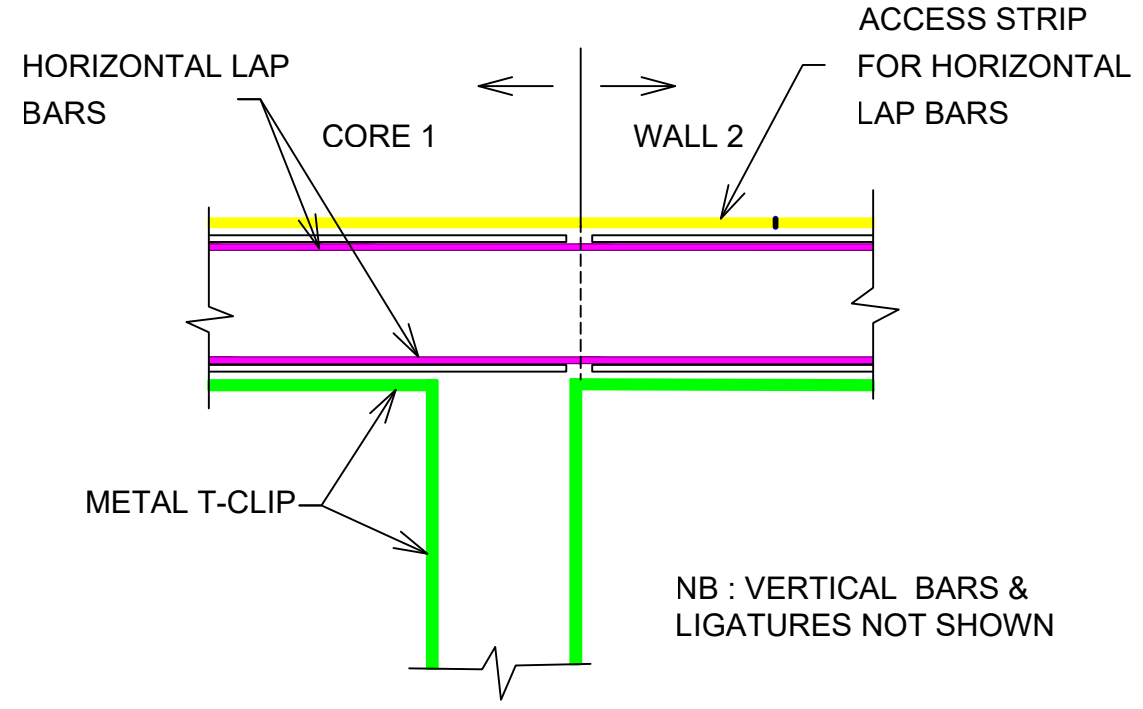
- 1) VERTICAL BARS AT 120/240 MM CENTERS TO SUIT THE METAL T-CLIP PROFILE
- 2) HORIZONTAL BARS ARE N16 AT 200 MM CENTERS. ADD ADDITIONAL BARS TO ACHIEVE THE REQUIRED AREA OF STEEL
- 3) THE MAXIMUM LOAD HEIGHT FROM ROAD LEVEL IS 5M
 - A) HENCE FOR FLOOR TO FLOOR HEIGHT OF AROUND 3.2 M VERTICAL BARS ARE CRANKED AND EXTENDED FROM TOP OF WALL
 - B) HENCE FOR FLOOR TO FLOOR HEIGHT OF AROUND 4M VERTICAL LAP BARS ARE SUPPLIED LOOSE AND ARE INSTALLED ON SITE
- 4) LIFT RAIL BRACKETS ARE INSTALLED AT THE FACTORY
- 5) REFER TO OZWALL CONCRETE PLACEMENT GUIDELINES



TYPICAL LIFT CORE LAYOUT



DETAIL A



DETAIL B (DETAIL C, SIMILAR)

g.wyett@ozwall.com.au M : 0405 144 886		SCALE	DRAWN BY:	CURRENT REV:
		AS NOTED	JP	
		TITLE:		
		DETAILS		
		DRAWING ID:		
		LC-01		
REV.	DATE	DESCRIPTION		
	19.11.2020			